

### Applications

- Data Centers
- Telecommunications Room
- Equipment Room :  
Interconnect or Cross-Connect
- Consolidation Points

### Features & Benefits

- Pre-Loaded with 6-Port Cat5e or Cat6 110-Type modules
- Compatible with 19" Racks or Cabinets
- Compatible with 110 Punch-down Tool
- Available color: Black
- Color-coded termination for T568A/B wiring schemes.
- Replaceable 6-Port Cat5e or Cat6 110-Type modules
- Port Identification windows
- Installation hardware and instructions manual are included



### Description

The Wirewerks 110-Type Rack Mount patch panels are designed to be versatile in accommodating multiple suppliers' equipment. They are made for exceptional performance with black powder-coated steel and are available in 1U and 2U rack space with 24 and 48 ports respectively. The high-density 19-inch panel is designed to be mounted on any standard rack or cabinet and it allows top, bottom or side cable entry. For easy cable management, each port is numbered to identify quickly the cable runs. A cable management bar is included as

well as a write-on designation label with clear hinged windows.

They are pre-loaded with 6-port Cat5e or Cat6 110-Type modules and provide flexible termination on the back using a 110 Punch-Down Tool. The RJ45 contact blades are 50µin gold plated. Broken or damaged connectors are no longer a hassle; the Wirewerks 6-Port Cat5e or Cat6 110-type modules provide easy snap-in replacement for the rack mount panels.

### Ordering information

Part Number	Description
WW000800	CAT5E 110 PATCH PANEL, 1U/24 PORT, BLACK, T568A/B
WW000801	CAT5E 110 PATCH PANEL, 2U/48 PORT, BLACK, T568A/B
WW000810	CAT6 110 PATCH PANEL, 1U/24 PORT, BLACK, T568A/B
WW000811	CAT6 110 PATCH PANEL, 2U/48 PORT, BLACK, T568A/B

### Packaging Includes:

1U/24 Port 110 Patch Panel	2U/48 Port 110 Patch Panel
24 X Tie-Wrap 4" Long	48 X Tie-Wrap 4" Long
1 X Cable Management Bar	2 X Cable Management Bar
4 X 6-Port Blank Labels	8 X 6-Port Blank Labels
1 X Instruction manual	1 X Instruction manual
4 X Phillips 10-32 Screw, 1/2" Long	4 X Phillips 10-32 Screw, 1/2" Long
4 X Phillips 12-24 Screw, 1/2" Long	4 X Phillips 12-24 Screw, 1/2" Long

### Technical Specifications

#### Physical Characteristics

Parameter	Value
Material (Panel)	16 Gauge Cold Rolled Steel, ABS UL 94V-0 Plastic (Housing)
Material (Spring-Wire)	Phosphor Bronze Alloy Plated with 50µin Gold over 100µin of Nickel
Material (IDC)	Phosphor Bronze Alloy with 100µin 100% Tin alloy
Storage Temp	Min -40°C (-40°F) Max 70°C (158°F)
Operation Temp	Min -10°C (14°F) Max 60°C (140°F)
Dimensions (without management bar)*	(1U) 19" X 1.75" X 1.35" ; (2U) 19" X 3.5" X 1.35"

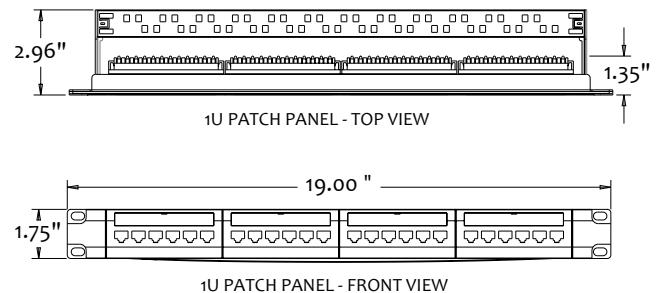
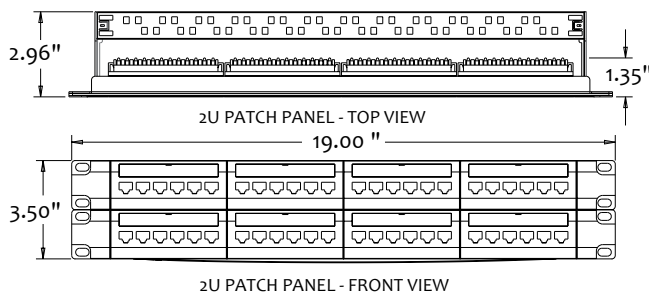
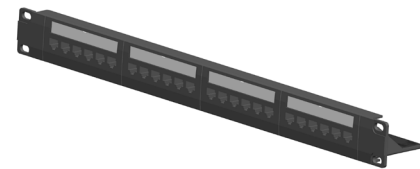
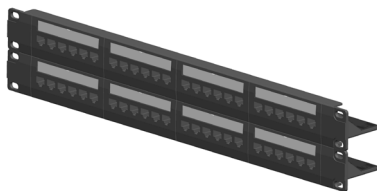
#### Mechanical Characteristics

Parameter	Value
Plug Retention	50 N (11 lbf) for 60 seconds
Mating Cycles	≥750 Cycles
IDC Wire Gauge	22-24 AWG

#### Electrical Characteristics

Parameter	Value
Insulation Resistance	≥500 MΩ at 100 V DC
Dielectric Withstanding Voltage	1000 V DC or AC Peak Contact-to-Contact at 60 Hz for 1 minute.
Spring Wire Contact Resistance	≤20 mΩ
IDC Wire Contact Resistance	≤2.5 mΩ

\*See below for dimensions with cable management bar



### Certification and Compliance

cULus  
ETL Verified ANSI/TIA-568-C.2  
TIA-606-A  
EIA-310-D  
FCC 47 part 68  
RoHS

Listed Communication Circuit Accessories  
Category 6 and Category 5e with the Applicable Electrical Transmission Characteristics  
Administration Standard for Telecommunications Infrastructure  
Requirements for Cabinets, Racks, Panels, and Associated Equipment  
Connection of the Terminal Equipment to the Telephone Network  
Directive on Restriction of Hazardous Substances