

OptiTect™ Premier Local Convergence Cabinet

An Evolant® Solutions Product

Corning
Cable Systems

Description

The OptiTect™ Premier Local Convergence Cabinet family provides everything necessary to manage 144, 288 and 432 distribution fibers for an outside plant FTTx application. The OptiTect Premier Cabinet maximizes efficient cabinet deployment through its industry-leading size and ease of use. All cabinets are afforded intuitive and efficient fiber management and internal layout, resulting in minimal installer training and optimizing installation productivity.

Feeder fibers, distribution fibers and coupler/splitter modules are all contained within a single, robust, pad- or pole-mounted enclosure to accommodate both aerial and buried cable applications. Cabinets are outfitted with factory-preconnectorized distribution and feeder cable(s) ensuring quick, easy and reliable field installation.

Each OptiTect Premier Cabinet accommodates either 1x32 or dual 1x16 modules. Coupler/splitter outputs are all single length and are optimized with slack storage controlled in easy-access management areas located on the sides of the cabinet's swing-out patch panel door. Within the cabinet, the pigtail routing is optimized with protection of existing subscribers being the primary consideration.

All 1x32 and dual 1x16 coupler/splitter modules are compatible and interchangeable across 144-, 288- and 432-port OptiTect Premier Cabinets. When used with an adaptor bracket, they also fit the Eclipse® Hardware Connector Housing. The modules are designed to meet applicable sections of Telcordia GR-1209-CORE and GR-1221-CORE. Each coupler/splitter module features connectorized inputs and outputs. The cabinet features permanent, as well as additional, temporary storage areas in unused slots within the coupler/splitter output port storage as part of the coupler/splitter housing area.



OptiTect Premier Cabinet (144 fibers) | Photo CCO92



OptiTect Premier Cabinet (288 fibers) | Photo HWPSS1753



OptiTect Premier Cabinet - Open (432 fibers) | Photo HWPSS1752

OptiText™ Premier Local Convergence Cabinet

An Evolant® Solutions Product

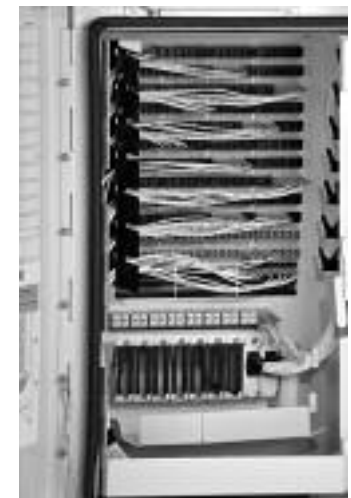
Corning
Cable Systems

Features / Benefits

- Distribution fiber counts of 144, 288 and 432
- Industry-leading cabinet size resulting in significant freight, storage and installation efficiencies
- One-size-fits-all coupler/splitter modules
- Only one size pad- or handhole-mounting-system needed for all three cabinets
- Pad or pole mountable; one-size-fits-all stackable skirt and mounting brackets due to uniform cabinet width and depth dimensions
- Accommodates both 1x32 and dual 1x16 splitters
- Fully factory-stubbed cabinets enhance competitive presence and enable rapid emergency restoration
- Connectorized feeder and distribution fibers to coupler/splitter modules – *no splicing after day one*
- Input (feeder) connections are equipped with shuttered adapters
- Integrated termination storage panel (parking) for coupler/splitter output
- Bend diameter control throughout
- Cabinets designed to meet applicable sections of Telcordia GR-2898-CORE, GR-487-CORE, GR-63-CORE, GR-449-CORE
- Modular splitters designed to meet applicable sections of GR-1209-CORE, GR-1221-CORE
- UL-listed
- 216-B door lock with padlock provision



OptiText™ Premier Cabinet (432 fibers)
with Swing-Out Panel (open) | Photo HWPSS1754



OptiText Premier Cabinet (288 fibers)
with Splitter Module Detail | Photo HWPSS1750



OptiText Premier Cabinet (432 fibers)
with Splitter Module Detail | Photo HWPSS1751

OptiText™ Premier Local Convergence Cabinet

An Evolant® Solutions Product

Corning
Cable Systems

Specifications

	144 Fiber	288 Fiber	432 Fiber
Configuration	Pole or Pad	Pole or Pad	Pole or Pad
Number of Doors	1 Door	1 Door	1 Door
Pole-Mount Height	45.7 cm (18.0 in)	68.5 cm (27.0 in)	84.6 cm (33.3 in)
Pad-Mount Height Includes 6-in skirt	61.0 cm (24.0 in)	83.8 cm (33.0 in)	99.8 cm (39.3 in)
Width	47 cm (18.5 in)	47 cm (18.5 in)	47 cm (18.5 in)
Depth	34.5 cm (13.6 in)	34.5 cm (13.6 in)	34.5 cm (13.6 in)
Empty Weight (Pole)	27.3 kg (60 lb)	31.8 kg (70 lb)	36.3 kg (80 lb)
Empty Weight (Pad)	27.3 kg (60 lb)	31.8 kg (70 lb)	38.3 kg (85 lb)
Connectors	SC APC or SC UPC	SC APC or SC UPC	SC APC or SC UPC
Max Number of Splitter Modules	(9) 1x16* (5) 1x32	(18) 1x16* (9) 1x32	(27) 1x16* (14) 1x32
Splitter Output Parking Capacity	32**	48**	48**
Maximum Splitter Output Capacity with One Splitter/Module Installed	64**	112**	152**
Standard Color	Almond***	Almond***	Almond***

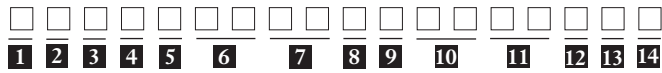
*Dual modules, **Vanishing parking panel used when no module installed – eight per panel, ***Other colors available



OptiText™ Premier Cabinet Family
(144, 288 and 432 fiber distribution) | Photo CCO90

Standard Cabinet Ordering Information

Contact your Customer Service representative at 800-743-2675 for more options.



1 Select cabinet color.

- P = Almond (standard)
- Q = Green (special color – call for lead time)
- R = Brown (special color – call for lead time)

2 Select cabinet size.

- D = 144 fiber
- C = 288 fiber
- A = 432 fiber

3 Select mounting.

- P = Pole
- A = Pad

4 Select feeder input type.

- P = Preconnectorized (no splice tray)

5 Select feeder fiber count.

- 1 = 12 fiber, used in 144 cabinet only (loose tube only)
- 2 = 24 fiber, used in 144 or 288 cabinets only, standard for 144 loose tube or ribbon
- 4 = 48 fiber, standard for 288 or 432 cabinets (loose tube or ribbon)

Note: Feeder fiber count should match or exceed maximum splitter capacity of 1x32 or 1x16. See Specification Table on page 3.

6 Select feeder cable length.

- 16 = 16 m (50 ft)
- 31 = 31 m (100 ft) standard

7 Select feeder cable type.

- C4 = SST-Ribbon™ Dielectric Cable
- W4 = ALTOS® Loose Tube Dielectric Cable
- WC = ALTOS Loose Tube Single-Jacket Single-Armored Cable

8 Select distribution cable configuration. (Select distribution cable count.)

- 1 = One cable

9 Select total distribution fiber count.

- C = 144 fiber (loose tube or ribbon)
- E = 288 fiber (loose tube or ribbon)
- A = 432 fiber (loose tube and ribbon)

10 Select distribution cable length.

- 16 = 16 m (50 ft)
- 31 = 31 m (100 ft) standard

11 Select distribution cable type.

- C4 = SST-Ribbon Dielectric Cable (144 cabinets only)
- W4 = ALTOS Loose Tube Dielectric Cable (144, 288 and 432 cabinets)
- Q4 = ALTOS Ribbon Dielectric Cable (288 or 432 cabinets only)
- WC = ALTOS Loose Tube Single-Jacket Single-Armored Cable

12 Select connector type.

- S = SC APC (standard)
- U = SC UPC

13 Select splitter module quantity.

- 0 = None (standard)
- 1 = One
- 2 = Two
- 3 = Three
- 4 = Four

14 Select module type.

- 0 = No module (standard)
- D = Dual 1x16
- A = 1x32

Coupler/Splitter Module Specifications

Standard Performance Devices

	Wavelength Range	Typical IL*	Max IL*	Uniformity*	Return Loss	Directivity	PDL
1x16 Coupler/Splitter Modules	1260-1360 and 1480-1580 nm	12.90	14.00	1.20	≥ 55	≥ 55	0.20
1x32 Coupler/Splitter Modules	1260-1360 and 1480-1580 nm	16.60	17.50	1.50	≥ 55	≥ 55	0.20
2x16 Coupler/Splitter Modules	1260-1360 and 1480-1580 nm	13.30	14.60	2.40	≥ 55	≥ 55	0.30
2x32 Coupler/Splitter Modules	1260-1360 and 1480-1580 nm	17.00	18.00	2.50	≥ 55	≥ 55	0.30

Premium Performance Devices

1x32 Coupler/Splitter Modules	1260-1360 and 1480-1580 nm	15.60	17.10	1.30	≥ 55	≥ 55	0.20
2x32 Coupler/Splitter Modules	1260-1360 and 1480-1580 nm	16.80	17.50	2.50	≥ 55	≥ 55	0.30

*Values provided do not include connectors.

Coupler/Splitter Ordering Information

U M 1 C C Z 2

1
2
3
4

1 Select performance grade.

B = Standard grade
P = Premium grade

2 Select input connector code.

5C = SC UPC
6C = SC APC (standard)

3 Select output connector code.

5C = SC UPC
6C = SC APC (standard)

4 Select coupler/splitter configuration.

1132 = 1x32 (standard)
2116 = Dual 1x16 (standard)
1216 = 2x16 single (special – call for lead time)
1232 = 2x32 (special – call for lead time)