

Bulkhead-Style Fiber Optic Panels

Fiber :: Patch, Splice and Combination

Overview

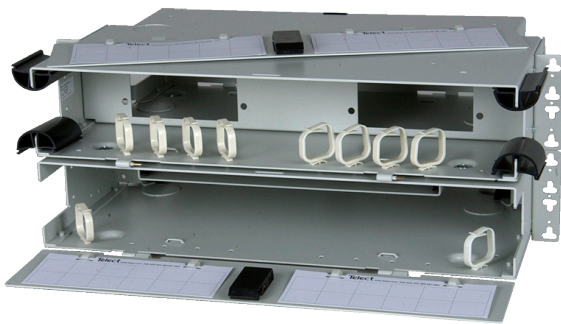
Telect bulkhead-style fiber optic panels provide cost-effective patch, splice and splitter capabilities in an industry-standard footprint. Panels range from 1 RU to 4 RU, with variable densities to support virtually any application or requirement.

Applications

- CATV
- MTSO
- Outside plant
- Central office
- Optical distribution/cross-connect

Primary Benefits

- Compliance in design
- Bend radius management
- Flammability safety
- Structural reliability
- Lightweight construction
- Standard footprint
- Simple installation
- Scalable to help manage costs
- Pre-loaded configurations accelerate deployment



LCX-C4RU

Specifications

Dimensions and Weights

All panels	Width	Depth
	17" (432 mm)	11" (280 mm)
	Height	Weight
1 RU patch or splice panel	1.75" (44 mm)	5 lbs (2.27 kg)
2 RU patch or splice panel	3.5" (89 mm)	6 lbs (2.72 kg)
3 RU patch or splice panel	5.25" (133 mm)	7 lbs (3.18 kg)
4 RU patch or splice panel	7" (178 mm)	8 lbs (3.63 kg)
2 RU combination panel	3.5" (89 mm)	10 lbs (4.54 kg)
4 RU combination panel	7" (282 mm)	12 lbs (5.44 kg)
6 RU combination panel	10.5" (267 mm)	14 lbs (6.35 kg)
8 RU combination panel	14" (356 mm)	16 lbs (7.26 kg)

Mechanical

Enclosure type	Rack-mount panel
Capacity	12, 24, 48, 72, or 96 ports based on configuration
Connector type	SC, ST, or FC, based on configuration
Material	Aluminum
Panel mounting	19" or 23"

Environmental

Humidity	0 to 90%, non-condensing
Temperature	-5 to 55 deg. C

Compliance

Agency compliance	NEBS, ETSI, Zone 4 Seismic reliability
-------------------	---

For additional information on Telect's bulkhead-style fiber optic panels visit www.telect.com or contact our sales team at 1.800.551.4567.

Bulkhead-Style Fiber Optic Panels

Fiber :: Patch, Splice and Combination

Step one: Select panel size and density.

Step two: Select patch plates, splice trays and accessories as required.

Patch Panels

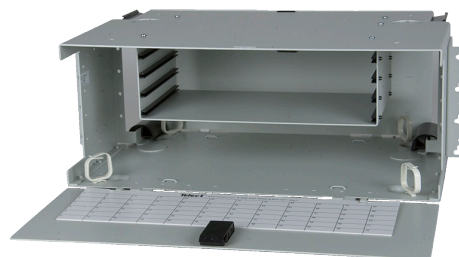
Description	Part Number	Patch Plates Required
1 RU/12-port	LCX-M1RU	2
2 RU/24-port	LCX-M2RU	4
3 RU/48-port	LCX-M3RU	8
4 RU/72-port	LCX-M4RU	12(6-port) patch plates
4 RU/96-port	LCX-M4RU	12(8-port) patch plates



LCX-M1RU

Splice Panels

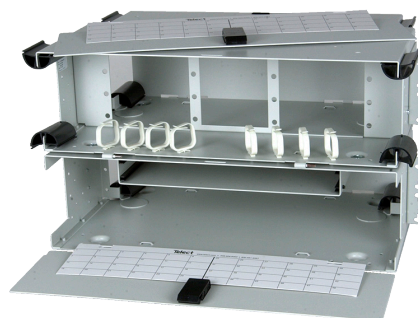
Description	Part Number	Splice Trays Required
1 RU/12-termination	LCX-S1RU	Included in panel
2 RU/24-termination	LCX-S2RU	1
3 RU/48-termination	LCX-S3RU	2
4 RU/72-termination	LCX-S4RU	3
4 RU/96-termination	LCX-S4RU	4



LCX-S4RU

Combination Panels

Description	Part Number	Patch Plates Required	Splice Trays Required
2 RU/12-port	LCX-C2RU	2	1
4 RU/24-port	LCX-C4RU	4	2
6 RU/48-port	LCX-C6RU	8	3
8 RU/72-port	LCX-C8RU	12 (6-port)	4
8 RU/96-port	LCX-C8RU	12 (8-port)	4



LCX-C6RU

Accessories

6-Port Patch Plates

SC/UPC	055-0000-6010
SC/APC	055-0000-6070
FC/UPC	055-0000-2010
FC/APC	055-0000-2070
ST/UPC	055-0000-3010

8-Port Patch Plates

SC/UPC	055-0000-6080
SC/APC	055-0000-6090
FC/UPC	055-0000-2080
FC/APC	055-0000-2090

12-Port Patch Plates

LC/UPC	055-0000-5010
LC/APC	055-0000-5090

Splice Tray

24-fiber splice tray	LCX-S-HSF
Splice sleeves	KIT-SLEEVES

Cable Management

Cable management hook kit, front panel, white	KIT-CMHOOK
Cable management hook kit, front panel, black	KIT-CMHOOK-BLK
Cable management hook kit, rear panel, white	KIT-CMRHOOK
Cable management hook kit, rear panel, black	KIT-CMRHOOK-BLK
Cable exit arc for 3 RU and 4 RU panels	KIT-CMARC
Clamp kit	KIT-CLMP

Additional Items

Bonding/grounding kit	KIT-BOND
Blank faceplate	055-0000-9000