

PORTABLE • ADJUSTABLE • DURABLE

Napco Part #CT27
Approved AT&T OIN#/PID#:
ATT.200001488

NEW CT27 CableTable Mini PORTABLE WORK TABLE WITH TRIPOD

Napco's new CT27 CableTable Mini technical work table is a unique, adjustable, portable work table with tripod, specifically designed for fiber optic splicing installers, datacom technicians, CATV techs or telecom craft workers doing splicing work, repairs or installs at the ONT or NID beside the home. The table surface adjusts easily to a wide range of heights (about 26" lowest to 66" highest). The Mini's fold flat design means it can be hung on the wall of your van, truck or trailer with no disassembly required. The work surface measures 22"x15" and the sturdy, heavy-duty tripod has both rubber feet and metal foot spikes for stable, safe (no-mar) indoor or outdoor (snow/ice) use.

The portable, CableTable mini Work Table features a tripod-mounted, matte black work surface and includes a heavy-duty tripod with mounting plate. The work surface is 22" X 15" and its work height adjusts from 26" (lowest) to 66" (highest). Folds flat for compact, hang-on-wall storage and rapid deployment. Weight 18 lbs.



Specifically Designed with the Installer in Mind

UNIQUE FEATURES OF THE CT27 CABLETABLE MINI:

- The tripod-mounted design is stable, adjustable, easy to deploy and folds flat for storage.
- Same durable, matte table top and legendary heavy-duty square tube construction as all our Napco CableTables (Industry-proven toughness, with extensive outside plant use for over 15 years throughout all the major Telco's).
- Accepts all of our CableTable Accessories (flex arm light, magnifier, cable clamp, T-bar, etc.)
- Adjusts easily to a wide range of working heights (about 26" lowest to 66" highest). Often the position of the boxes beside the house can vary widely, making height adjustment critical.
- Work surface is 22"x15". Compact size fits easily in your truck or van, yet large enough to hold everything you need to get the job done.
- Heavy-duty tripod is very sturdy and stable on uneven ground and allows for rapid leveling, setup and tear down.
- The tripod has both rubber feet and extendable foot spikes for safe (no-mar) indoor or outdoor (snow/ice) use.



- At only 18 lbs., the CT27 CableTable Mini is maneuverable and light weight, without sacrificing stability or durability.
- Folds flat, with no disassembly required, to instantly hang on wall of van, truck or trailer.
- Not just for FTTx fiber splicers either, any type of Telecom, CATV or field service technician can use the CT27 Mini as a sturdy, portable work table for a wide range of field service, data center or outside plant applications.
- Integrated corner clamps accommodate our T-bar accessory or your own custom accessories and can even hold grounding rods as alternative legs for set up at virtually any work site.



- Specs: Work Surface: 22" x 15"; Wt.: 18 lbs.;
Folded Flat Dimensions: 40" x 15" x 7";
Adjustable Height: 26" to 66";
Indoor/Outdoor, rubber or spiked tripod Feet

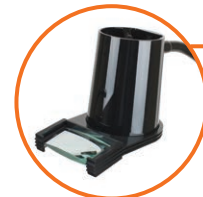
AVAILABLE ACCESSORIES



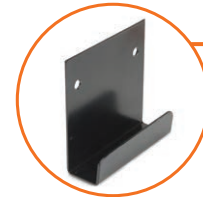
CL100
CORDED
LIGHT
WITH
FLEX ARM



CL200 MAGNIFIER
LENS WITH
FLEX ARM



CL300 ADD-ON
MAGNIFIER



CTHB WALL
HANGER BRACKET



CL500 UNIVERSAL
CABLE CLAMP



CTTB
T-BAR FIXTURE